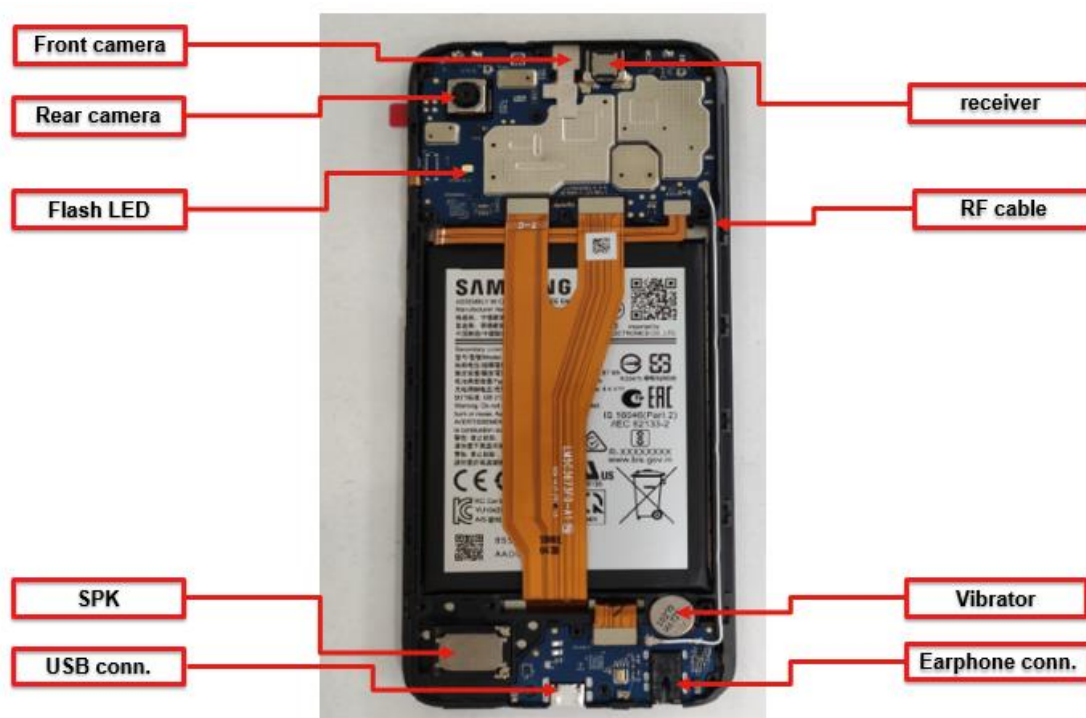

7. Level 2 Repair

7-1. Components on the Rear Case



7. Level 2 Repair

7-2. Pre-requisite

	
ESD Tweezers / Disassembly Stick / SCREW DRIVER	Anti-static Gloves
	
Anti-static Mat	Disassembly Pick
	
ESD Strap	suction cup

7. Level 2 Repair

7-3. Disassembly

1

Use the ejection pin to remove the SIM tray.



2

Use the disassembly pick to remove the battery cover.



※ Caution

1) Be care of scratch

※ Caution

1) Be care of scratch

3

Remove the battery cover.



※ Caution

1) Be care of scratch

4

Remove 16pcs screws.



※ Caution

1) Be careful not to damage the PBA

7. Level 2 Repair

5

Remove the screws with the screw driver.



6

Use the disassembly stick to remove the PCB A cover.



※ Caution

1) Be care of connector damage

※ Caution

1) Be care of LCM FPC damage

7

Use the disassembly stick to remove the SUB PCBA cover.



8

Use the disassembly stick to separate battery & LCD connectors.



※ Caution

1) Be care of scratch

※ Caution

1) Be care of several kinds of damage

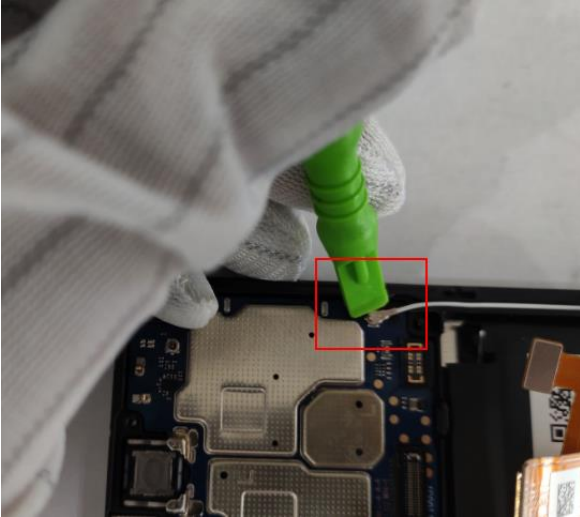
Confidential and proprietary-the contents in this service guide subject to change without prior notice

Distribution, transmission, or infringement of any content or data from this document without Samsung's written authorization is strictly prohibited.

7. Level 2 Repair

9

Use the disassembly stick to remove the RF cable connector from Main PCBA side.



※ Caution

1) Be care of several kinds of damage

10

Use the tweezers to remove the main PCBA.

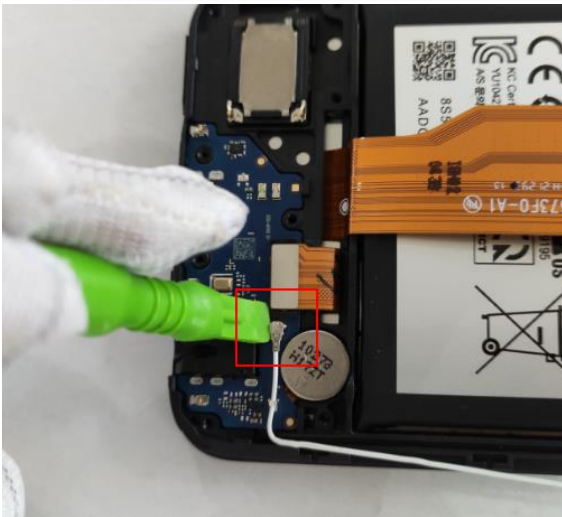


※ Caution

1) Be careful not to damage the main PCBA

11

Use the disassembly stick to remove the R F cable.

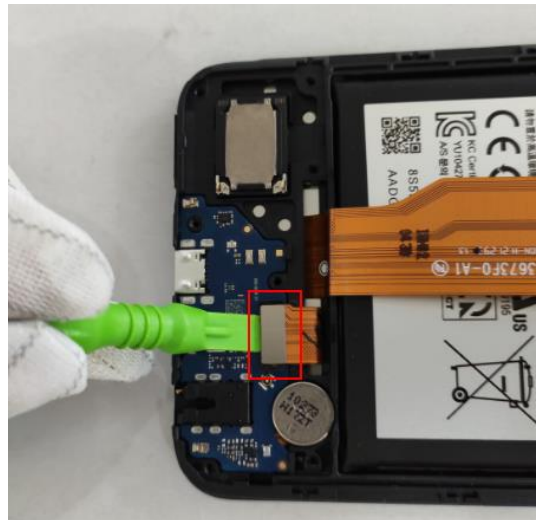


※ Caution

1) Be careful not to damage the RF cable

12

Use the disassembly stick to unlock the SUB PCBA BTB conn.



※ Caution

1) Be careful not to damage the BTB conn.

7. Level 2 Repair

13

Use the tweezer to remove the SUB PCBA.

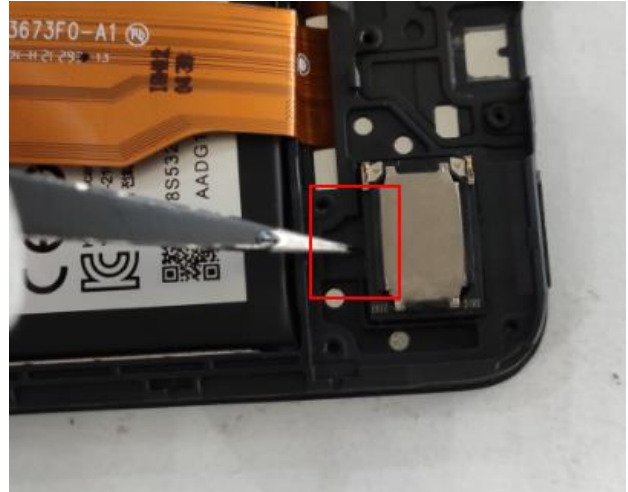


※ Caution

1) Be care of SUB PCBA of damage

14

Use the tweezer to remove the SPK.



※ Caution

1) Be care of SPK of damage

15

Use the tweezers to remove the vibrator.

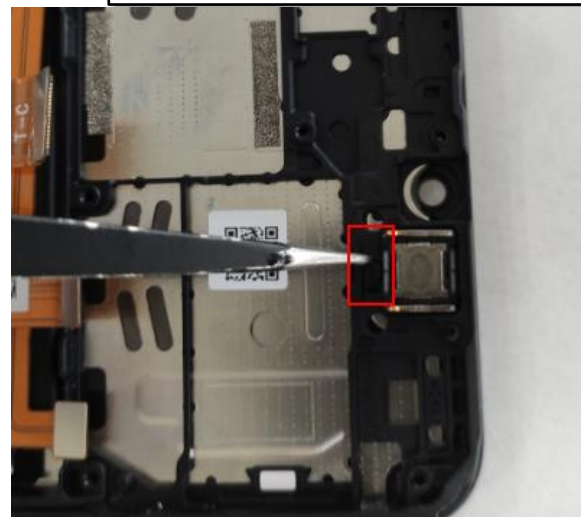


※ Caution

1) Be care of several kinds of damage

16

Use the tweezers to remove the receiver.



※ Caution

1) Be care of several kinds of damage

7. Level 2 Repair

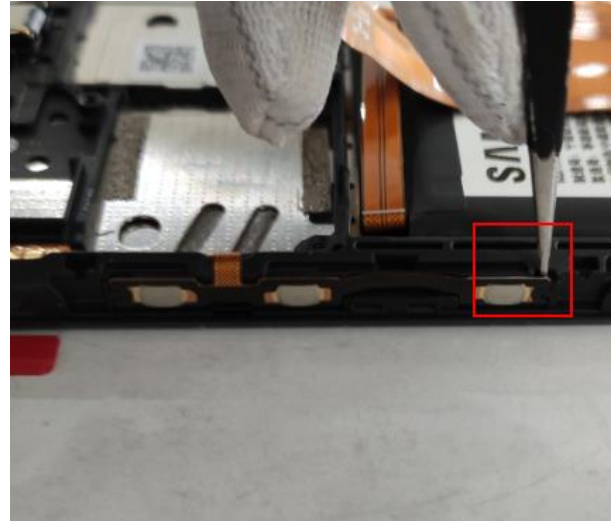
17

Use the tweezers to remove the Side key FPC.



18

Use the tweezers to remove the Side key FPC.



※ Caution

1) Be care of several kinds of damage

※ Caution

1) Be care of several kinds of damage

19

Inject 2ml absolute alcohol into the bottom of the battery.



20

Remove the battery with a suction cup .



※ Caution

1) Be care of several kinds of damage

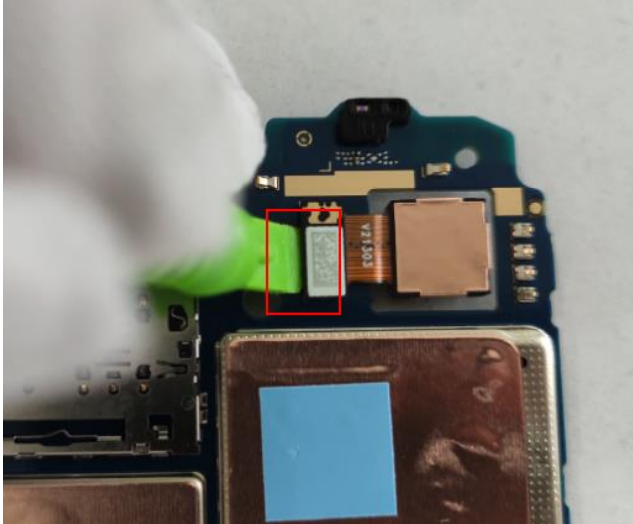
※ Caution

1) Be care of several kinds of damage

7. Level 2 Repair

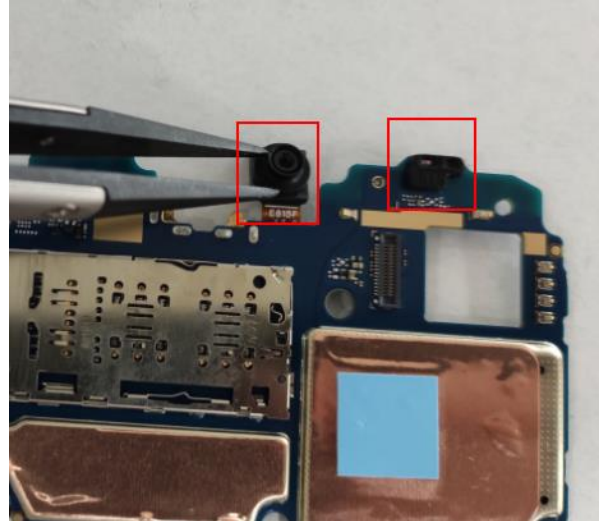
21

Use the disassembly stick to remove the rear camera.



22

Use the tweezer to remove the front camera rubber and L/P sensor rubber.



✖ Caution

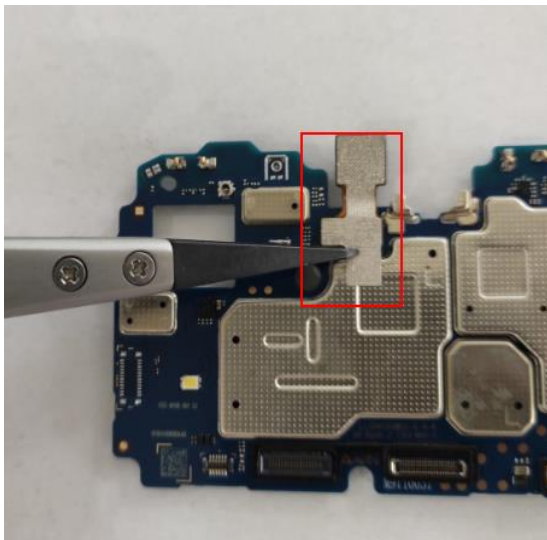
1) Be care of several kinds of damage

✖ Caution

1) Be care of several kinds of damage

23

Use the tweezer to remove the front camera conductive cloth.

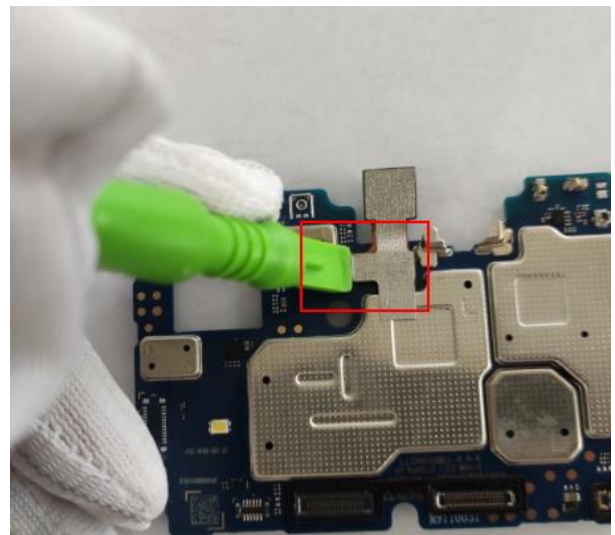


✖ Caution

1) Be care of several kinds of damage

24

Use the disassembly stick to remove the rear camera.

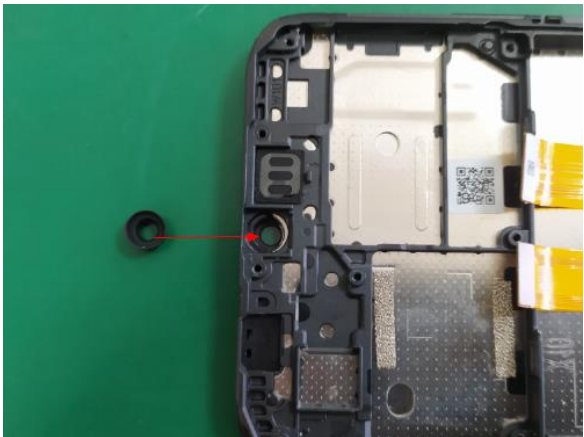
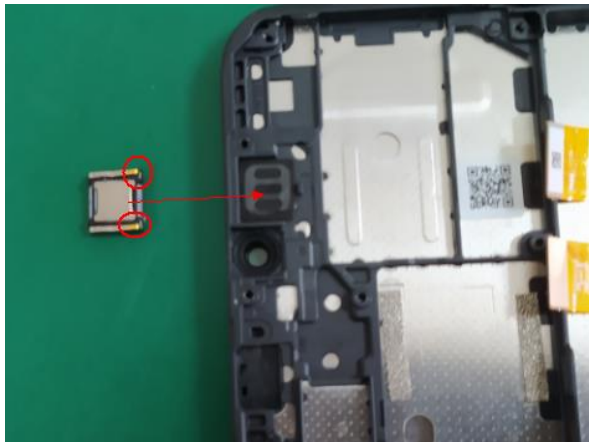
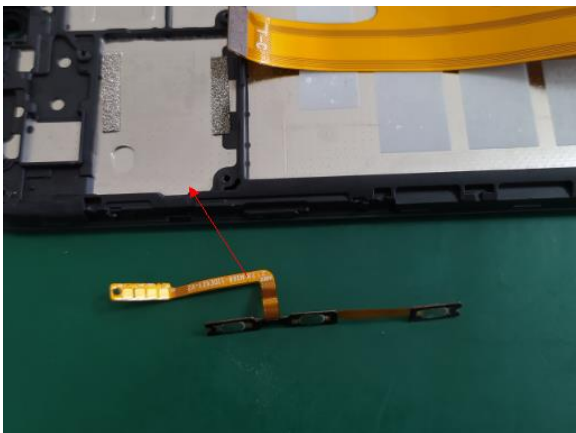
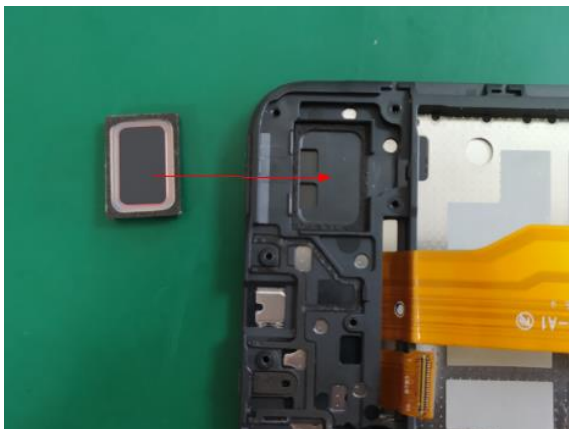


✖ Caution

1) Be care of several kinds of damage

7. Level 2 Repair

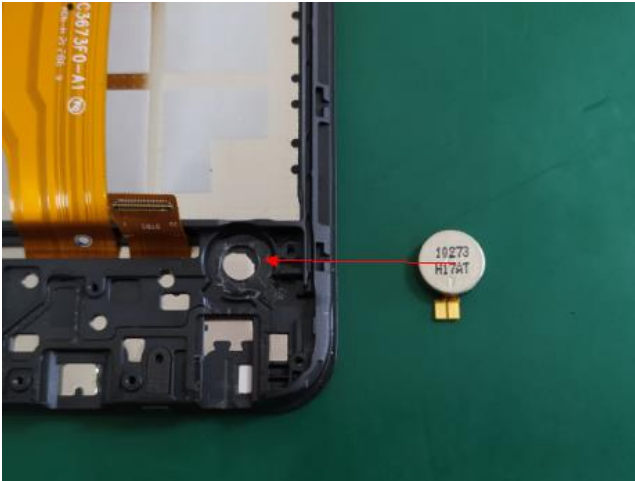
7-5. Assembly

<div data-bbox="127 324 204 385">1</div> <div data-bbox="231 324 778 436">Assemble the front camera rubber in the front assy.</div> <div data-bbox="151 465 737 900">A photograph showing the front camera rubber being assembled into the front housing. A red arrow points from the rubber to the mounting hole in the housing.</div>	<div data-bbox="829 324 906 385">2</div> <div data-bbox="933 324 1481 436">Assemble the receiver in the front assy.</div> <div data-bbox="837 456 1428 896">A photograph showing the receiver being assembled into the front housing. A red arrow points from the receiver to the mounting hole in the housing.</div>
<div data-bbox="124 1048 359 1108">※ Caution 1) Be care of damage</div>	<div data-bbox="821 1019 1500 1137">※ Caution 1) Pay attention to the orientation of the two metal pins of the receiver. 2) If the receiver is reused, the foam glue needs to be replaced.</div>
<div data-bbox="135 1169 212 1229">3</div> <div data-bbox="231 1169 778 1258">Assemble the side key FPC in the front housing.</div> <div data-bbox="175 1303 753 1733">A photograph showing the side key FPC being assembled into the front housing. A red arrow points from the FPC to the mounting hole in the housing.</div>	<div data-bbox="837 1169 914 1229">4</div> <div data-bbox="933 1169 1481 1258">Assemble the SPK in the front housing.</div> <div data-bbox="865 1303 1436 1729">A photograph showing the SPK being assembled into the front housing. A red arrow points from the SPK to the mounting hole in the housing.</div>
<div data-bbox="124 1877 798 1982">※ Caution 1) Be care of not damage the FPC. 2) If the side key FPC is reused, the double faced adhesive tape needs to be replaced.</div>	<div data-bbox="821 1877 1500 1982">※ Caution 1) Be care not damage the SPK.. 2) If the SPK is reused, the double faced adhesive tape needs to be replaced</div>

7. Level 2 Repair

5

Assemble the vibrator in front housing.



※ Caution

- 1) Be care of several kinds of damage
- 2) If the moto is reused, the double faced adhesive tape needs to be replaced.

6

Assemble the battery in front housing.

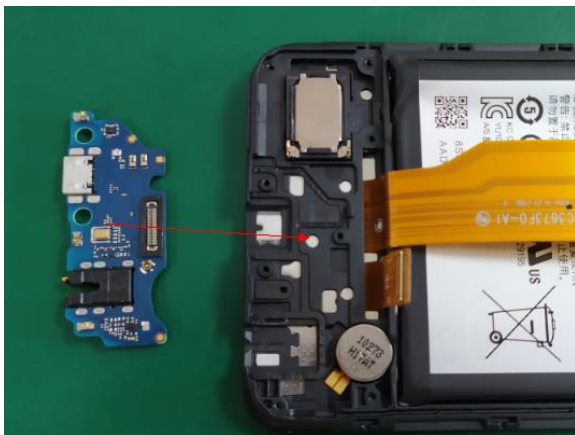


※ Caution

- 1) Be care of several kinds of damage
- 2) The double-sided adhesive tape in the battery compartment cannot be reused.

7

Assemble the SUB PCBA in front housing.

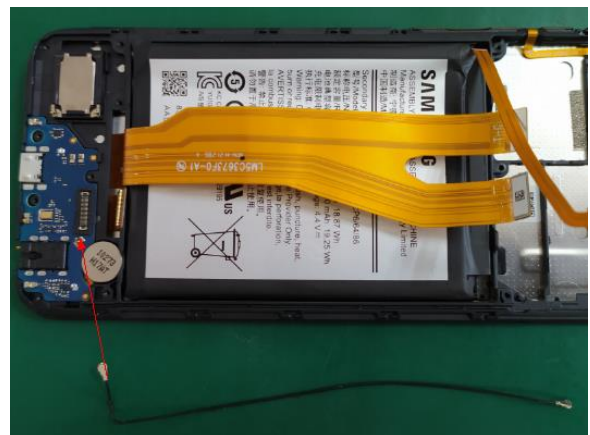


※ Caution

- 1) Be care of several kinds of damage

8




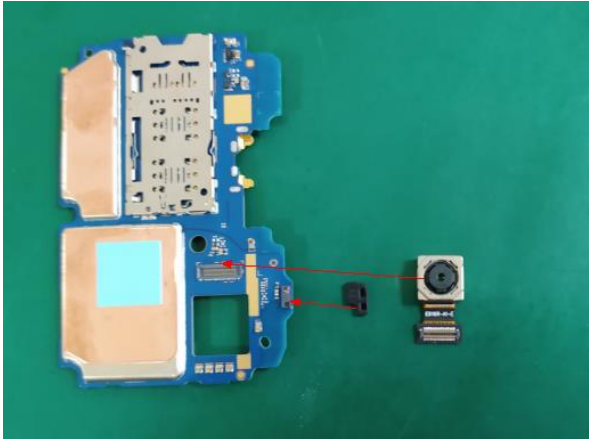
Assemble the RF cable to SUB PCBA.



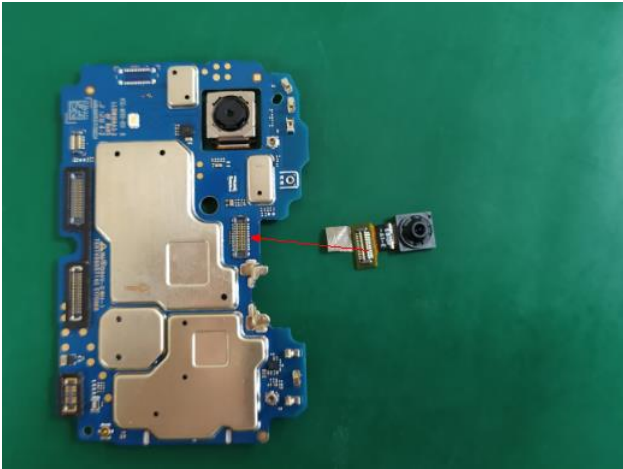
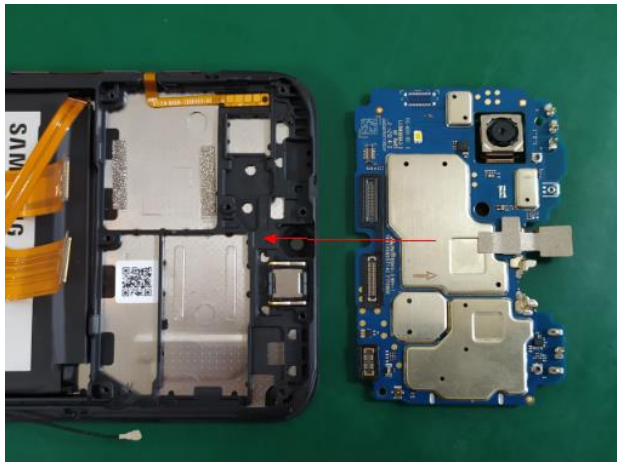


※ Caution

- 1) Be care of several kinds of damage

7. Level 2 Repair

<div>9</div> <div>Lock the SUB PCBA BTB connector.</div> <div></div>	<div>10</div> <div>Assemble the SUB PCBA cover to SUB PCBA.</div> <div></div>
<div>※ Caution</div> <div>1) Be care of press the connector</div>	<div>※ Caution</div> <div>1) Be care of press the connector</div>
<div>11</div> <div>Lock 8pcs screws to SUB PCBA cover.</div> <div></div>	<div>12</div> <div>Assemble the rear camera and L/P sensor rubber to PCBA.</div> <div></div>
<div>※ Caution</div> <div>1) Be care of several kinds of damage</div>	<div>※ Caution</div> <div>1) Be care of press the connector</div> <div>2) Be careful not to touch the camera lens with your fingers</div>

7. Level 2 Repair

<div data-bbox="129 226 778 300"><div>13</div><div>Assemble the front camera to PCBA.</div></div> <div data-bbox="142 358 767 824">A photograph showing a blue printed circuit board (PCBA) with various components. A red arrow points to a small, square front camera module being positioned near a connector on the board.</div>	<div data-bbox="831 226 1490 300"><div>14</div><div>Assemble the main PCBA.</div></div> <div data-bbox="842 358 1461 817">A photograph showing the main PCBA being inserted into a black plastic phone chassis. A red arrow points to the alignment of the board within the chassis.</div>
<div>※ Caution</div> <div>1) Be care of press the connector 2) The conductive cloth pasted on the front camera needs to be replaced with a new one</div>	<div>※ Caution</div> <div>Be careful not to damage the Main PBA</div>
<div data-bbox="129 1016 778 1090"><div>15</div><div>Lock the RF cable FPC,LCM FPC and battery FPC to the PCBA.</div></div> <div data-bbox="150 1176 767 1639">A photograph showing the internal components of the phone chassis. A red arrow points to a yellow flexible printed circuit (FPC) cable being connected to a port on the PCBA. Another red arrow points to a black FPC cable being connected to another port.</div>	<div data-bbox="831 1016 1490 1090"><div>16</div><div>Assemble the PCBA cover to PCBA.</div></div> <div data-bbox="834 1178 1452 1637">A photograph showing a black plastic PCBA cover being aligned with the main PCBA. A red arrow points to the alignment of the cover with the board.</div>
<div>※ Caution</div> <div>Be care of press the connector</div>	<div>※ Caution</div> <div>1) Be care of several kinds of damage</div>

7. Level 2 Repair

17

Lock 8 pcs screws to PCBA cover.



18

Assemble the battery cover.



※ Caution

1) Be care of several kinds of damage

※ Caution

1) Be care of scratch

19

Assemble the SIM card tray to the phone.
(Complete installation)



※ Caution

Be care of scratch